

**2020 Census**

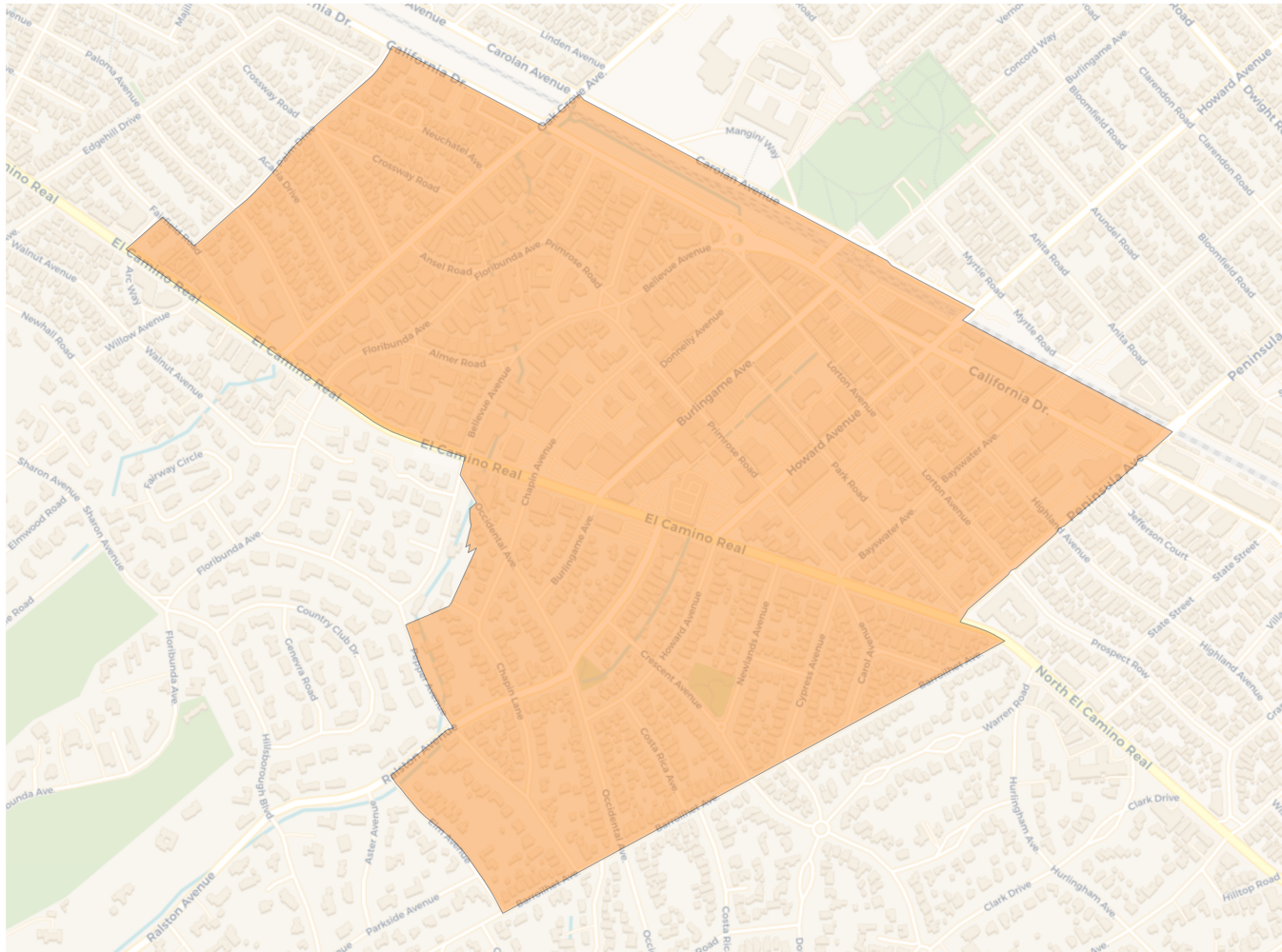
	A	B	C	D	E
Population	6,151	6,143	6,430	6,359	6,333
Deviation	-132	-140	147	76	50
Deviation %	-2.1%	-2.2%	2.3%	1.2%	0.8%
Other	3,668	3,759	4,224	2,925	3,703
Other %	59.6%	61.2%	65.7%	46.0%	58.5%
Latino	1,023	880	636	525	1,205
Latino %	16.6%	14.3%	9.9%	8.3%	19.0%
Asian	1,386	1,425	1,521	2,878	1,366
Asian %	22.5%	23.2%	23.7%	45.3%	21.6%
Black	74	79	49	31	59
Black %	1.2%	1.3%	0.8%	0.5%	0.9%

**Citizen Voting Age Population (CVAP)**

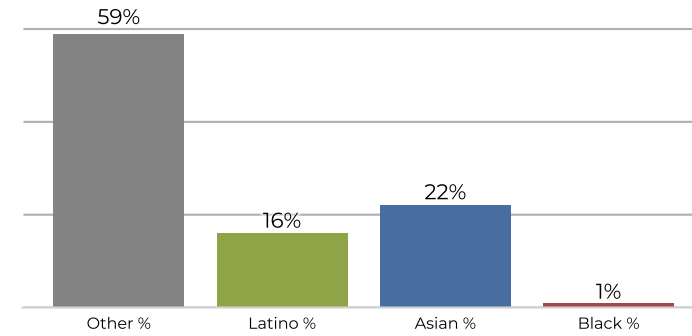
	A	B	C	D	E
Total CVAP	4,101	3,624	4,080	3,700	4,158
Other CVAP	2,721	2,401	2,826	1,939	2,633
Other CVAP %	66.3%	66.3%	69.3%	52.4%	63.3%
Latino CVAP	603	404	269	198	716
Latino CVAP %	14.7%	11.1%	6.6%	5.4%	17.2%
Asian CVAP	676	767	974	1,495	788
Asian CVAP %	16.5%	21.2%	23.9%	40.4%	19.0%
Black CVAP	101	52	11	68	21
Black CVAP %	2.5%	1.4%	0.3%	1.8%	0.5%



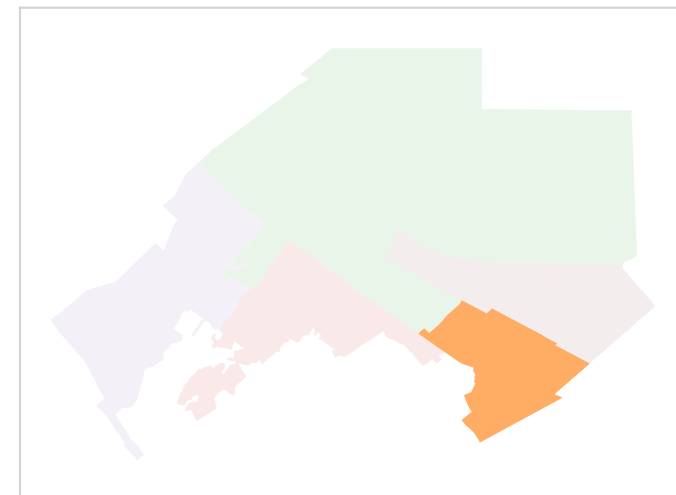
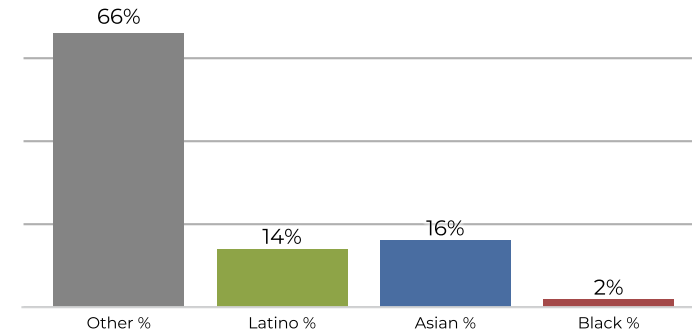
**District A**



**2020 Census**

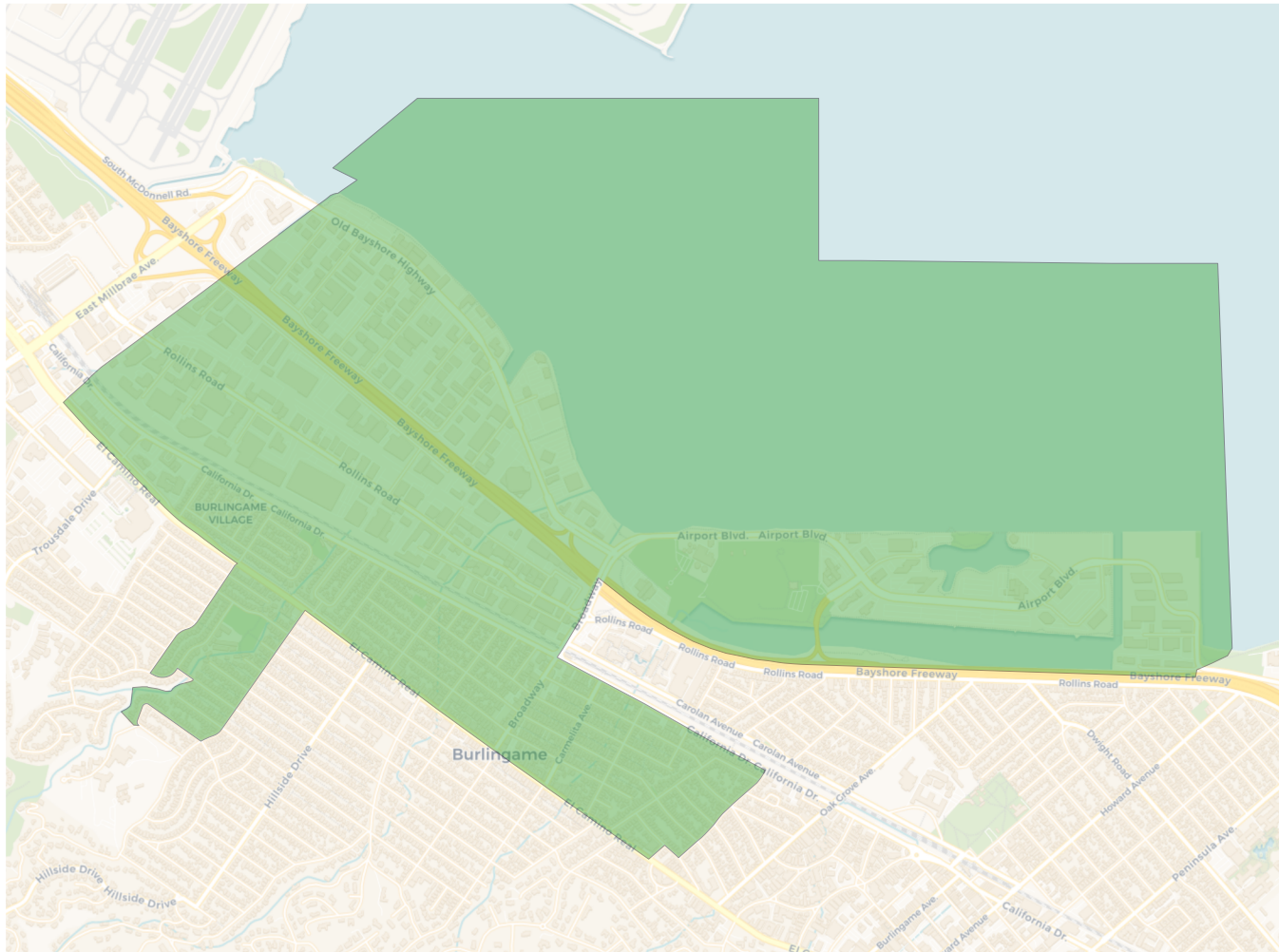


**Citizen Voting Age Population**

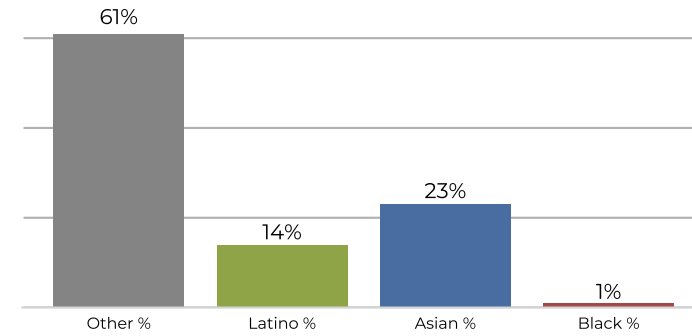


Population	Deviation	Deviation %	Other	Other %	Latino	Latino %	Asian	Asian %	Black	Black %
6,151	-132	-2.1%	3,668	59.6%	1,023	16.6%	1,386	22.5%	74	1.2%
Total CVAP	Other CVAP	Other CVAP %	Latino CVAP	Latino CVAP %	Asian CVAP	Asian CVAP %	Black CVAP	Black CVAP %		
4,101	2,721	66.3%	603	14.7%	676	16.5%	101	2.5%		

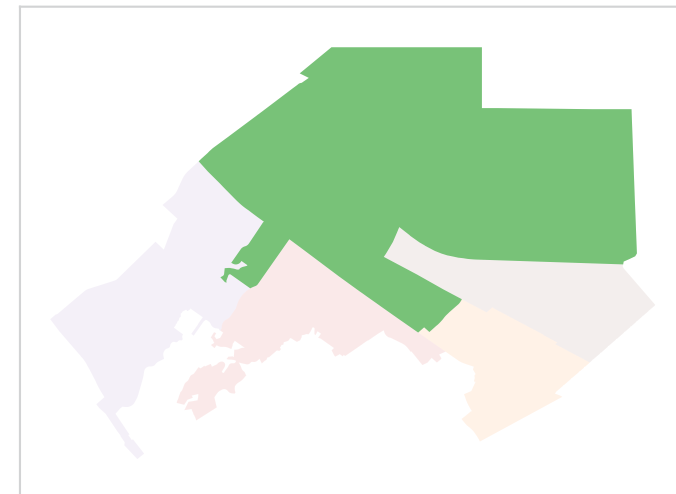
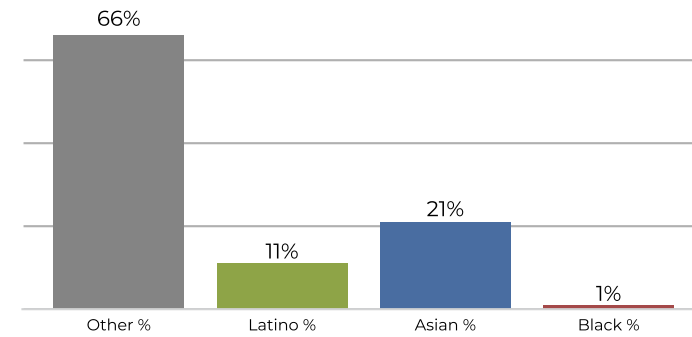
**District B**



**2020 Census**



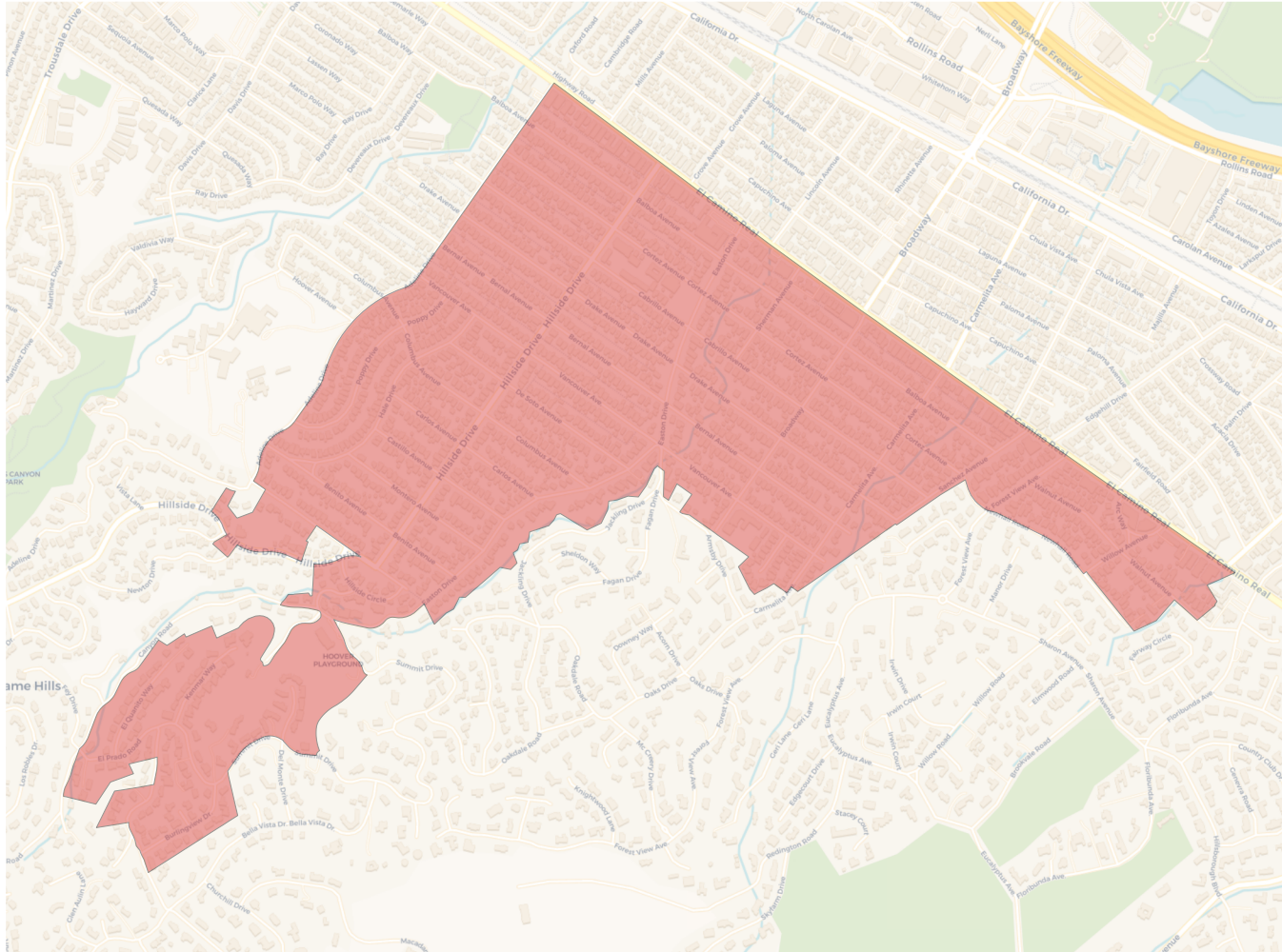
**Citizen Voting Age Population**



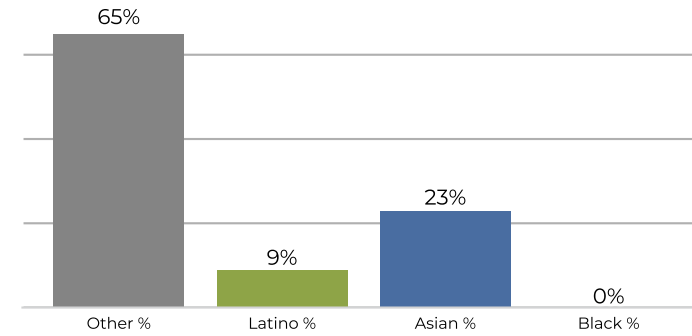
Population	Deviation	Deviation %	Other	Other %	Latino	Latino %	Asian	Asian %	Black	Black %
6,143	-140	-2.2%	3,759	61.2%	880	14.3%	1,425	23.2%	79	1.3%
Total CVAP	Other CVAP	Other CVAP %	Latino CVAP	Latino CVAP %	Asian CVAP	Asian CVAP %	Black CVAP	Black CVAP %		
3,624	2,401	66.3%	404	11.1%	767	21.2%	52	1.4%		



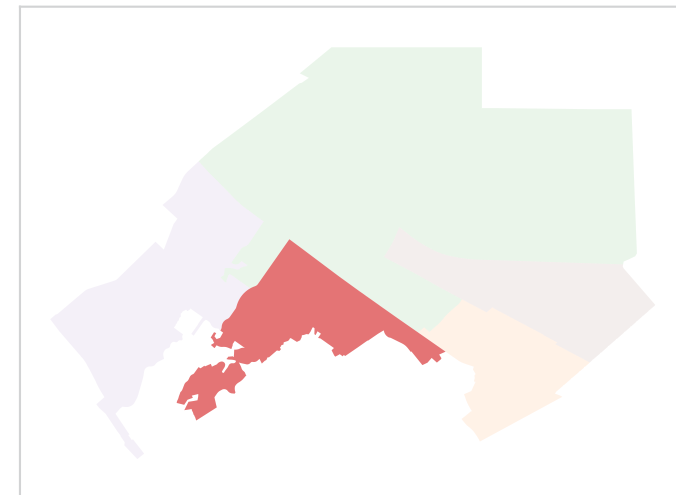
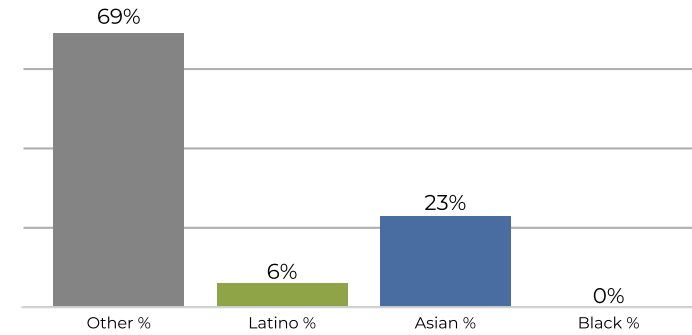
**District C**



**2020 Census**

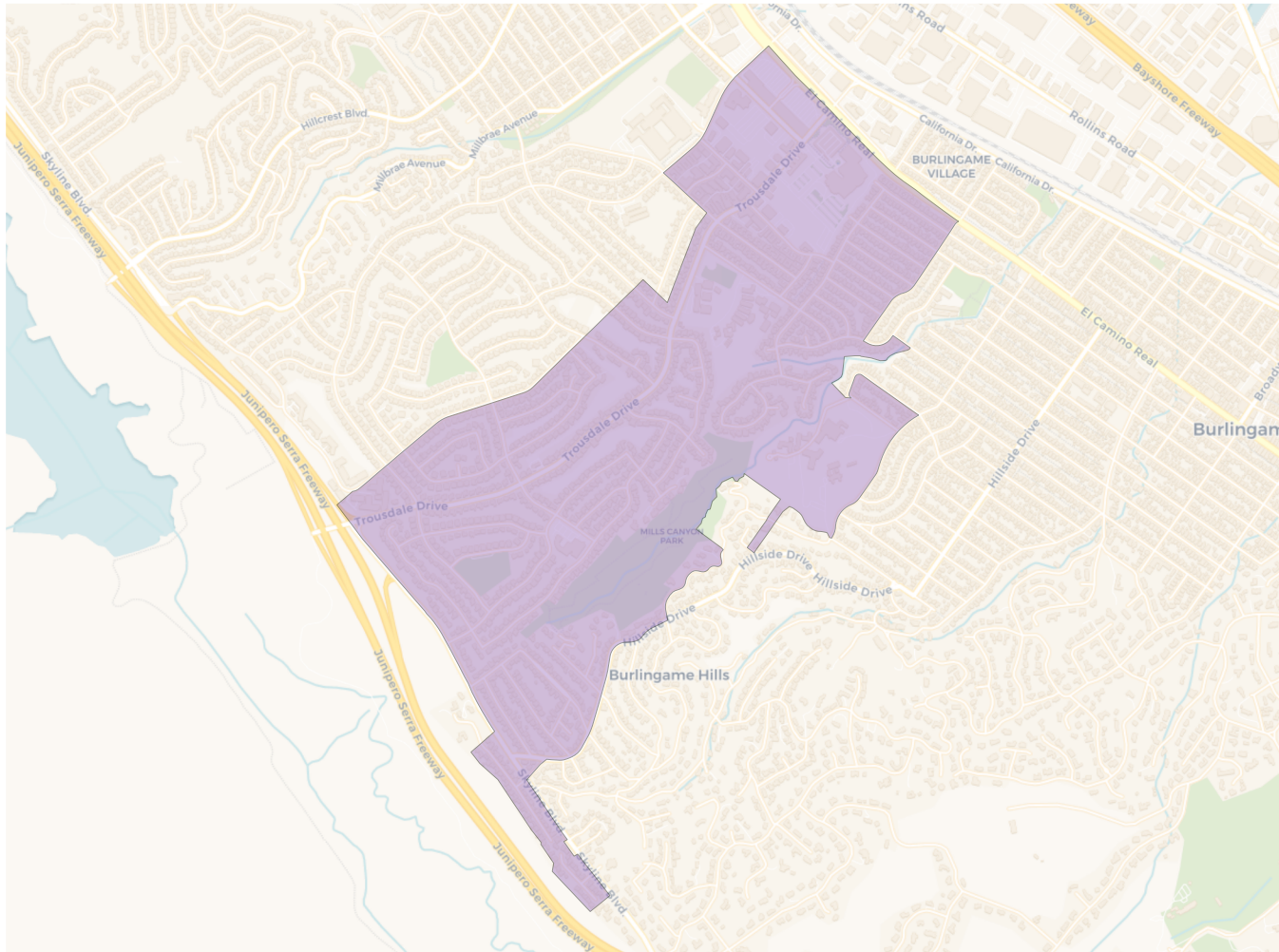


**Citizen Voting Age Population**

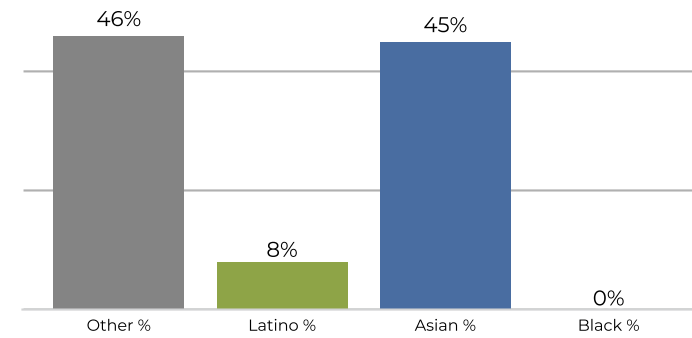


Population	Deviation	Deviation %	Other	Other %	Latino	Latino %	Asian	Asian %	Black	Black %
6,430	147	2.3%	4,224	65.7%	636	9.9%	1,521	23.7%	49	0.8%
Total CVAP	Other CVAP	Other CVAP %	Latino CVAP	Latino CVAP %	Asian CVAP	Asian CVAP %	Black CVAP	Black CVAP %		
4,080	2,826	69.3%	269	6.6%	974	23.9%	11	0.3%		

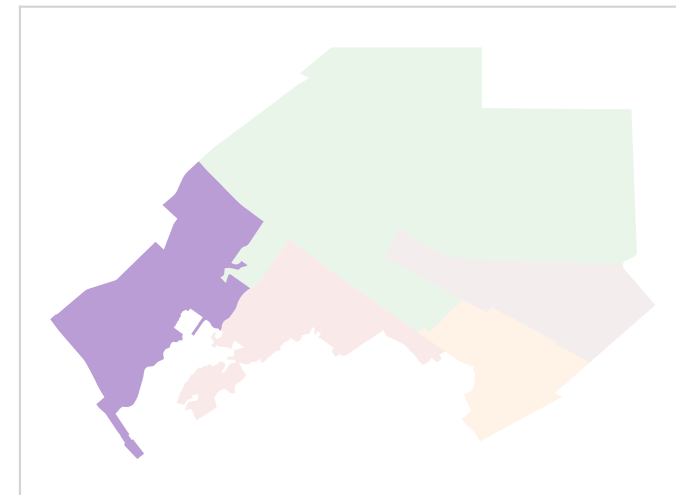
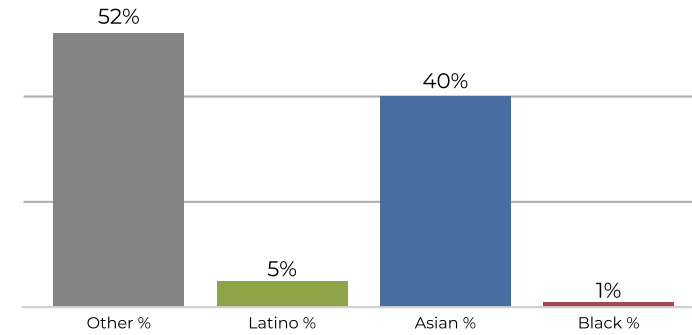
**District D**



**2020 Census**



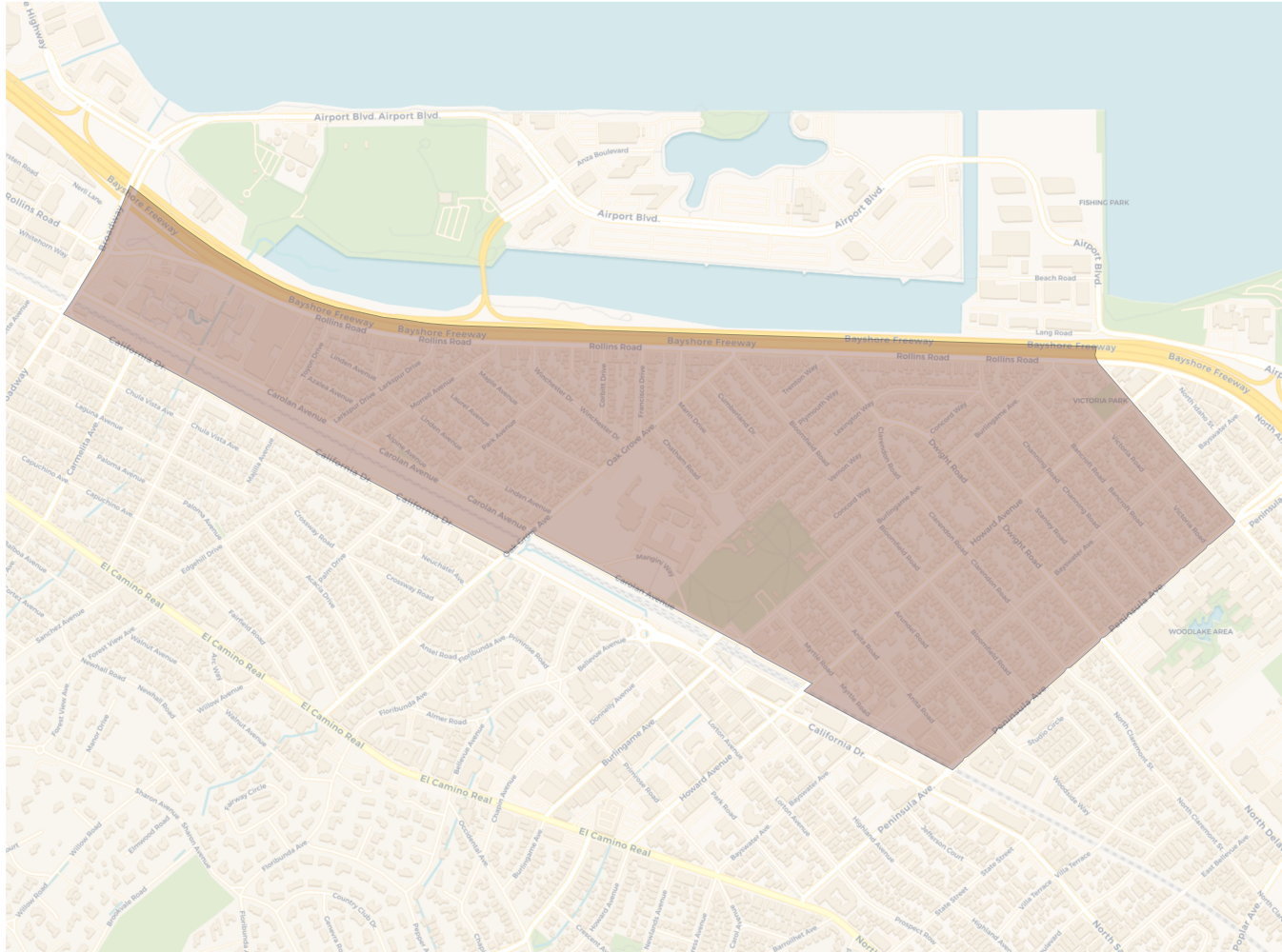
**Citizen Voting Age Population**



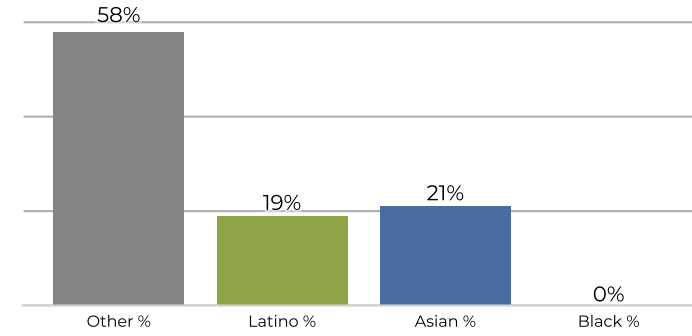
Population	Deviation	Deviation %	Other	Other %	Latino	Latino %	Asian	Asian %	Black	Black %
6,359	76	1.2%	2,925	46.0%	525	8.3%	2,878	45.3%	31	0.5%
Total CVAP	Other CVAP	Other CVAP %	Latino CVAP	Latino CVAP %	Asian CVAP	Asian CVAP %	Black CVAP	Black CVAP %		
3,700	1,939	52.4%	198	5.4%	1,495	40.4%	68	1.8%		



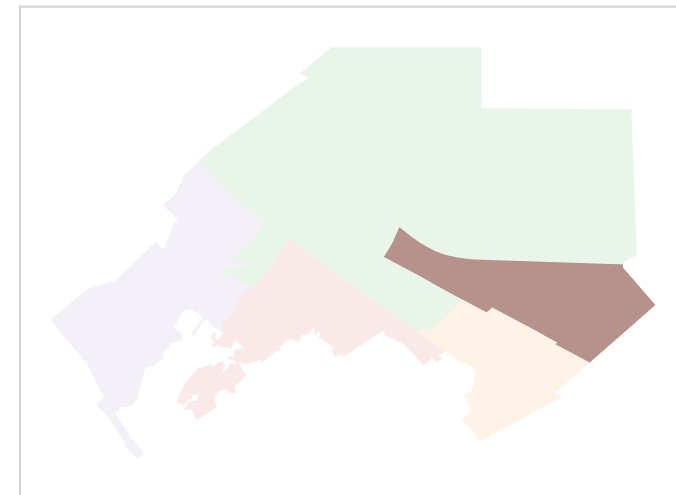
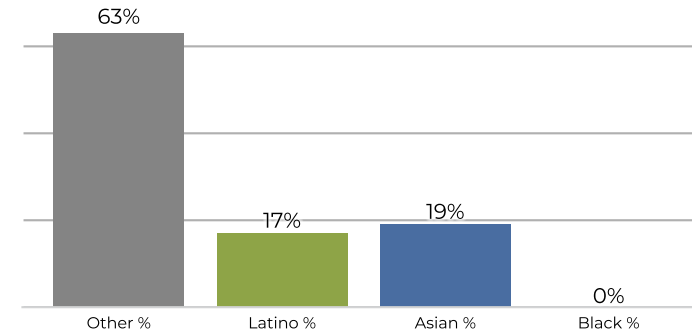
**District E**



**2020 Census**



**Citizen Voting Age Population**



Population	Deviation	Deviation %	Other	Other %	Latino	Latino %	Asian	Asian %	Black	Black %
6,333	50	0.8%	3,703	58.5%	1,205	19.0%	1,366	21.6%	59	0.9%
Total CVAP	Other CVAP	Other CVAP %	Latino CVAP	Latino CVAP %	Asian CVAP	Asian CVAP %	Black CVAP	Black CVAP %		
4,158	2,633	63.3%	716	17.2%	788	19.0%	21	0.5%		